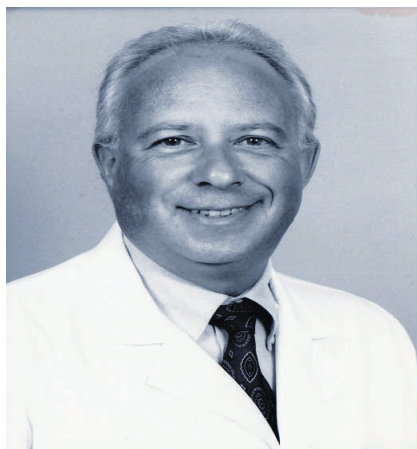


HAVE YOU HEARD...

 Washington
University in St. Louis
Physicians

Summer 2009
Division of Adult Audiology
Department of Otolaryngology
Website: <http://audiology.wustl.edu>



Robert Mareing

AUDIOLOGY STAFF INFORMATION

Bob Mareing, Au.D. CCC-A received his bachelor's degree in Psychology and Master's degree in Audiology from the University of Illinois and his Au.D. from Salus University in Pennsylvania. Bob's primary interest within the field of audiology is **hearing rehabilitation** while his interests outside of work include farming and training German Shepherds. Bob is married and has one son.



Steven Smith

Steve Smith, Au.D., CCC-A received his bachelor's degree in Speech and Hearing Science from the University of Utah and his Master's degree in Audiology from Central Institute for the Deaf at Washington University; he completed his Au.D. at Salus University in Pennsylvania. Prior to returning to St. Louis, Steve worked in an Otolaryngology Practice in San Antonio, TX. Steve's primary audiology interests are **diagnostic, electrophysiologic assessment and hearing rehabilitation**. Steve will be developing **inpatient** audiological services at **Barnes Jewish Hospital**. In his free time, Steve enjoys spending time with his family, reading, biking and playing basketball.

Both Bob and Steve joined the audiology staff this spring.

- **Diane Duddy and Bob Mareing** are serving on the **Missouri Academy of Audiology (MAA)** board.
- **Jennifer Listenberger and Judy Peterin** received their **Au.D.** from Salus University in Pennsylvania, **2009**.

Services:

- Washington University and Barnes Jewish Hospital continue to offer Audiology services to the **inpatients of BJH**. If you or someone you know need hearing or hearing aid services while in the hospital, please call 314-362-7489.
- **Audiology newsletters** (current and previous issues) are available online at:
- **www.audiology.wustl.edu** Please call Jen Listenberger at: 432-4110 to add or remove your name from the newsletter notification list.

DISCOUNTS:

- **5% BJC plus/Oasis member discount** on the purchase of new hearing aids (earmolds not included). Please tell us you are a member when ordering your new hearing aid(s) or call 314-362-7587 to become a member today.
- **Washington University** faculty and family receive **15% discount** on the purchase of new hearing aids (earmolds not included). Please tell us if this discount applies when you are ordering your hearing aids.

RESEARCH NEWS:

• BAHA

Kristi Oeding, a 3rd year AuD student at PACS is involved in a study to determine the **benefit of BAHA (Bone anchored hearing aid) alone versus with open fit hearing aid on patients with asymmetrical hearing loss**

• HEARING ASSISTANCE TECHNOLOGY

Jessica Teymouri, a 3rd year AuD student at PACS has compiled a list of **hearing assistance technology available at public venues** in the St. Louis area. This information is available on our website: <http://www.audiology.wustl.edu/oto/audio>



LISTENING ACTIVITIES:

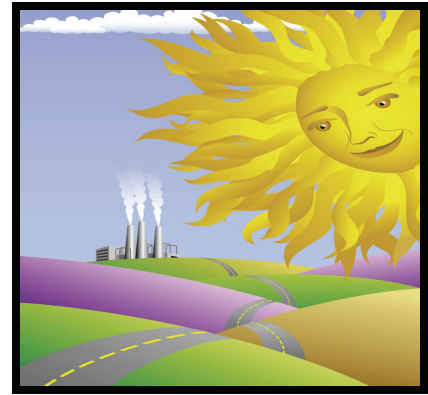
Persons with hearing loss may benefit from practicing their listening skills. Following are resources that offer activities to practice your listening skills:

<http://www.esl-lab.com/>
Offers many listening tasks of various difficulty

<http://www.ello.org/games/games/htm>
This is an easy set of games that gives you a verbal description of pictures and asks you to pick the correct picture

<http://www.manythings.org/ac/>
This website is more challenging offering auditory and memory tasks

www.neurotone.com
a comprehensive training program for listening skills. You may purchase LACE (Listening and Communication Enhancement) directly or ask your audiologist for more information.



.SUMMER IS HERE

Nightly use of your **dryn-store is recommended** to keep your hearing aids working optimally and don't forget to make sure the dryn-store's dry briks are working properly. The **dry briks** should be replaced every **two months** regardless of the status of the indicator bar. If you are using a **rechargeable** desiccant, replacement is recommended annually.

If you need either of these products you may stop in to any of our three clinics to pick them up or call to have them delivered to you by mail.

If your **behind-the-ear hearing aid** is likely to be exposed to **moisture** you may want to consider hearing aid **sweat bands** an easy to use protector for your hearing aid. Contact your audiologist for more details.